

Review

A Horizon Scan of Emerging Issues for Global Conservation in 2019

William J. Sutherland,^{1,*} Steven Broad,² Stuart H.M. Butchart,^{1,3} Stewart J. Clarke,⁴ Alexandra M. Collins,⁵ Lynn V. Dicks,⁶ Helen Doran,⁷ Nafeesa Esmail,⁸ Erica Fleishman,⁹ Nicola Frost,¹⁰ Kevin J. Gaston,¹¹ David W. Gibbons,^{12,13} Alice C. Hughes,¹⁴ Zhigang Jiang,^{15,16} Ruth Kelman,¹⁷ Becky LeAnstey,¹⁸ Xavier le Roux,^{19,20} Fiona A. Lickorish,²¹ Kathryn A. Monk,²² Diana Mortimer,²³ James W. Pearce-Higgins,^{1,24} Lloyd S. Peck,²⁵ Nathalie Pettorelli,²⁶ Jules Pretty,²⁷ Colleen L. Seymour,²⁸ Mark D. Spalding,²⁹ Jonathan Wentworth,³⁰ and Nancy Ockendon¹

We present the results of our tenth annual horizon scan. We identified 15 emerging priority topics that may have major positive or negative effects on the future conservation of global biodiversity, but currently have low awareness within the conservation community. We hope to increase research and policy attention on these areas, improving the capacity of the community to mitigate impacts of potentially negative issues, and maximise the benefits of issues that provide opportunities. Topics include advances in crop breeding, which may affect insects and land use; manipulations of natural water flows and weather systems on the Tibetan Plateau; release of carbon and mercury from melting polar ice and thawing permafrost; new funding schemes and regulations; and land-use changes across Indo-Malaysia.

Aims of Horizon Scanning

We present the 15 topics identified in our tenth annual horizon scan of emerging issues that are likely to be relevant to global conservation. These are issues that could have significant impacts on society's ability to conserve regional or global biodiversity, but for which the conservation community currently has generally low awareness. These topics were identified by a group of 28 participants, including experts in futures research and horizon scanning, advisors to policy makers, researchers, and practitioners of conservation and other aspects of environmental science. The areas highlighted are highly varied, ranging from major infrastructure projects and new technological developments, to new funding schemes and regulations that are likely to transform food production and land use. We aim to draw the attention of the global conservation community to the potential opportunities and risks associated with these issues. We hope that by raising awareness, we will encourage research, discussion, and allocation of funds, in addition to management and policy change, resulting in improved understanding and greater preparedness. This could facilitate the global conservation community and wider society to respond effectively to the development of these issues. Our work therefore may inform researchers, funding bodies, policy makers, regulatory bodies, conservation organisations, and practitioners.

Our approach is supported by the maturing of many issues from previous scans. For example, overexploitation of sand resources was highlighted by Sutherland *et al.* [1], and subsequent evidence has demonstrated that sand extraction has negative effects on seagrass meadows, nesting terrapins, and migratory waterbirds [2]. In another example, WWF, in partnership with

Highlights

We present the 15 topics identified in our tenth annual horizon scan for global conservation.

Scoring was carried out by a diverse group of experts using a Delphi-like process.

Scores were based on the topics' novelty, likelihood, and potential for major impacts on biodiversity.

Emerging themes include conservation impacts of biotechnological advances in agriculture.

Other issues included climate change-induced release of carbon and mercury from polar ice.

¹Conservation Science Group, Department of Zoology, Cambridge University, The David Attenborough Building, Pembroke Street, Cambridge, CB2 3QZ, UK

²TRAFFIC, The David Attenborough Building, Pembroke Street, Cambridge, CB2 3QZ, UK

³BirdLife International, The David Attenborough Building, Pembroke Street, Cambridge, CB2 3QZ, UK

⁴The National Trust, Heelis, Kemble Drive, Swindon, SN2 2NA, UK

⁵Centre for Environmental Policy, Imperial College, London, UK

⁶School of Biological Sciences, University of East Anglia, Norwich, NR4 7TJ, UK

⁷Natural England, Eastbrook, Shaftesbury Road, Cambridge, CB2 8DR, UK

fisheries and technology companies, has implemented a pilot project that uses blockchain technology (identified in [1]) to trace tuna from capture to distribution in an attempt to reduce illegal and unregulated fishing [How blockchain and a smartphone can stamp out illegal fishing and slavery in the tuna industry. (<http://www.wwf.org.au/news/news/2018/how-blockchain-and-a-smartphone-can-stamp-out-illegal-fishing-and-slavery-in-the-tuna-industry#gs.JH0AC4s>)]. Discussions continue about extending the application of blockchain to a wide range of other supply chains (e.g., timber [3]). In January 2018, the European Parliament voted to ban the use of electric currents for commercial fishing (electric pulse trawling) [New fisheries rules: add a ban on electric pulse fishing, say MEPs. (<http://www.europarl.europa.eu/news/en/press-room/20180112IPR91630/new-fisheries-rules-add-a-ban-on-electric-pulse-fishing-say-meps>)], a topic raised by Sutherland *et al.* [4]. Although in practice electric pulse trawling is continuing much as it did before the vote, the swift political action may imply that awareness of the practice and its environmental effects was relatively high in the research and European policy arenas. By increasing recognition of the issues described in this review, we aim to encourage dialogue about their potential negative and positive impacts on conservation, in order to guide proactive solutions and harness future opportunities.

Identification of Issues

Our methods for this horizon scan were consistent with those used in our previous nine annual scans (e.g., see [5,6], Figure 1). The 28 core participants (the authors) used a modified version of the Delphi technique that is repeatable, inclusive, and transparent [7,8]. Participants' expertise covered diverse conservation-related disciplines, including marine, freshwater, and terrestrial ecology; agriculture and land use; microbiology; conservation practice and technology; sustainability; environmental management; policy; economics; research programming; science communication; and professional horizon scanning. The participants were affiliated with academia, government, and non-governmental organisations.

Participants consulted their professional networks one-on-one, via wider conversations and requests at meetings, and through targeted social media and group email requests. We consulted approximately 495 people during the initial stage of issue identification, leading to the submission of 91 issues. The criteria used for considering the suitability of topics for submission to the exercise were: novelty (or, for better-known issues, a marked change in the intensity or nature of their impact that was considered novel or poorly known); the potential for major positive or negative effects on the conservation of global or regional biological diversity in the future; and a reasonable likelihood that the importance of the topic would increase.

We grouped submissions that addressed a similar issue together and scored variations of the same issue collectively. The long list of 91 issues was circulated to participants, who scored each issue from 0 to 1000 on the basis of both its novelty and the potential magnitude of its effects; they also recorded whether they had previously been aware of each issue. Participants were given the option of adding comments on each topic related to the criteria. For example, frequent comments from participants included issues already being too well known, issues being similar to or linked to each other, or issues being too far from realisation to be plausible. To counter possible scoring fatigue, or unconscious differences in scoring of issues near the start and end of a long list [9], the order in which issues were presented differed among the participants. Each individual's scores were used to rank the issues. The 35 issues with the highest median ranks, along with any comments, were retained for round-table discussion in

⁸Oxford Martin Programme on the Illegal Wildlife Trade, 34 Broad St, Oxford, OX1 3BD, UK

⁹Department of Fish, Wildlife and Conservation Biology, Colorado State University, Fort Collins, CO 80523, USA

¹⁰Fauna & Flora International, The David Attenborough Building, Pembroke Street, Cambridge CB2 3QZ, UK

¹¹Environment and Sustainability Institute, University of Exeter, Penryn Campus, Penryn, Cornwall, TR10 9FE, UK

¹²RSPB Centre for Conservation Science, Royal Society for the Protection of Birds, The Lodge, Sandy, SG19 2DL, UK

¹³RSPB, The David Attenborough Building, Pembroke Street, Cambridge CB2 3QZ, UK

¹⁴Centre for Integrative Conservation, Xishuangbanna Tropical Botanical Garden, Chinese Academy of Sciences, Xishuangbanna, Yunnan, 666303, P.R. China

¹⁵Institute of Zoology, Chinese Academy of Sciences, Beijing, 100101, P.R. China

¹⁶University Chinese Academy of Sciences, Beijing, 100049, P.R. China

¹⁷Natural Environment Research Council, Polaris House, North Star Avenue, Swindon, SN2 1EU, UK

¹⁸Environment Agency, Horizon House, Deanery Road, Bristol, BS1 5AH, UK

¹⁹Microbial Ecology Centre, UMR1418 INRA, CNRS, University Lyon 1, 69622 Villeurbanne, France

²⁰La Fondation pour la Recherche sur la Biodiversité, 195 rue Saint Jacques, 75005 Paris, France

²¹UK Research and Consultancy Services (RCS) Ltd, Valletts Cottage, Westhope, Hereford, HR4 8BU, UK

²²Natural Resources Wales, Cambria House, 29 Newport Road, Cardiff, CF24 0TP, UK

²³Joint Nature Conservation Committee, Monkstone House, City Road, Peterborough, PE1 1UA, UK

²⁴British Trust for Ornithology, The Nunnery, Thetford, IP24 2PU, UK

²⁵British Antarctic Survey, Natural Environment Research Council, High Cross, Madingley Road, Cambridge, CB3 0ET, UK

²⁶Institute of Zoology, Zoological Society of London, Regent's Park, London, NW1 4RY, UK

²⁷School of Biological Sciences, University of Essex, Colchester, CO4 3SQ, UK

²⁸South African National Biodiversity

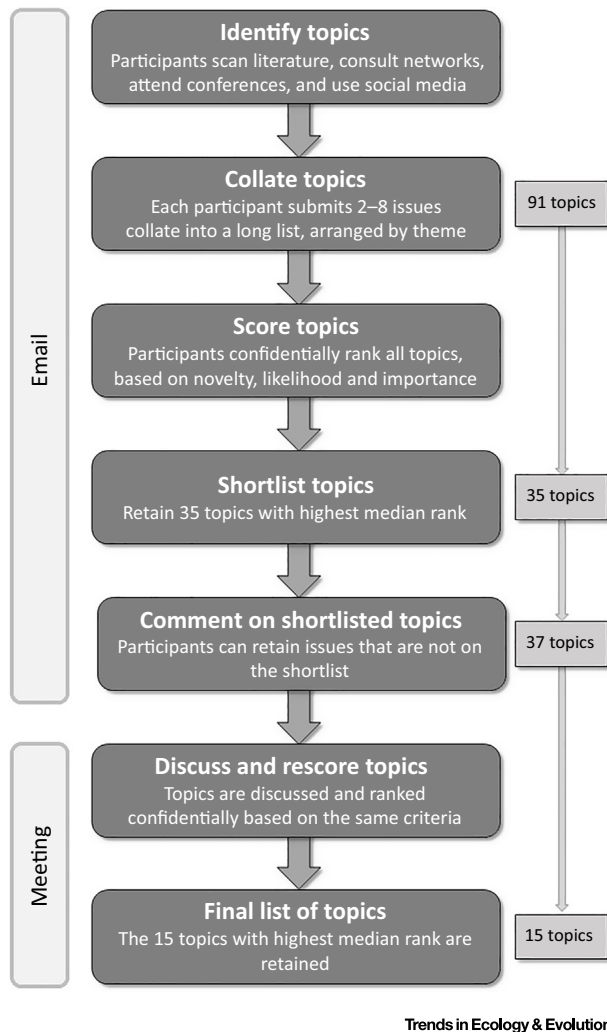


Figure 1. The Stages of the Horizon Scanning Procedure used to Identify the Topics Presented in this Paper.

Cambridge (United Kingdom) in September 2018. After this initial scoring, participants were given the opportunity to retain any issues that they thought had been undervalued; one issue was retained during this process. A new issue that had emerged in the global news media during this period also was presented, giving a total of 37 issues for consideration during the meeting (Figure 1).

Prior to the round-table discussion, two participants were assigned to each of the 37 topics (three to the newly suggested topic) to further investigate its novelty, likelihood of occurrence or implementation, and likely magnitude of positive or negative effects. During the meeting, each topic in turn was discussed in relation to the criteria for inclusion. The rank from the initial round of scoring and the proportion of participants that were aware of the topic were considered in the discussion. During the discussion of some topics, the emphasis was adjusted, or additional points and sources of information were included. Following discussion of each topic, all participants independently and confidentially rescored the topic. The 15 issues with the highest

Institute, Private Bag X7, Claremont
7735, South Africa
²⁹Global Marine Team, The Nature
Conservancy, Department of Physical,
Earth, and Environmental Sciences,
University of Siena, Pian dei
Mantellini, Siena 53100, Italy
³⁰Parliamentary Office of Science and
Technology, 14 Tothill Street,
Westminster, London, SW1H 9NB, UK

*Correspondence:
w.sutherland@zoo.cam.ac.uk (W.J.
Sutherland).

median ranks at the end of the meeting are presented here, grouped thematically rather than in rank order.

The 2019 Issues

Change in the Capacity of Antarctic Benthos to Store Carbon as Climate Changes

The Antarctic is losing ice faster than previously projected. Gigatonnes of ice sheet are being lost every year, with rates increasing over time [10], leading to large freshwater outflows and rapid changes in nearshore salinity. This melting could also lead to increases in sedimentation, greater in extent than anything seen previously, smothering benthic communities in bays and fjords around the continent. Additionally, rapid loss of sea ice may mediate increases in phytoplankton and heighten the potential for iceberg–seabed collisions (or ice scour), associated with high zoobenthos mortality [11]. The seabed on the polar continental shelves is among the largest sinks of oceanic, or blue, carbon on Earth [12], and the functioning of its ecosystems could substantially shape the global carbon cycle and rate of climate change. The two opposing factors acting on oceanic carbon could result in different outcomes, and the balance between the two is unpredictable. The current expectation is that an increase in organisms on the vast, warming sub-Antarctic shelves likely will increase oceanic carbon storage, which could become the single largest negative feedback on climate change. However, opposing this is a likely loss of carbon in regions of scouring where giant icebergs are frequently grounded, emphasising the complexity and uncertainty surrounding this issue [12].

Extensive Release of Mercury by Thawing Permafrost

Mercury is a highly toxic element that is released from both natural and anthropogenic sources. It accumulates in aquatic and terrestrial food chains, and negative effects have been demonstrated on animal neurology and reproduction, plant growth, and soil microbial function (e.g., [13,14]). Although the potential for release of mercury from thawing permafrost is known [15], two recent studies concluded that the magnitude of the release could be far greater than was previously thought. Olson *et al.* [16] estimated that 408 000 tonnes of mercury is stored in the active layer of the northern hemisphere permafrost, while Schuster *et al.* [17] estimated approximately double this quantity, 863 000 tonnes, with an additional 793 000 tonnes in the permanently frozen layers. The latter total of 1 656 000 tonnes is roughly twice that of the global aggregate across all other soils, oceans, and the atmosphere. Given that climate change could cause much of the permafrost to thaw over the next century, most of this accumulation of mercury will be transported from soil, via streams and rivers, to the oceans. This could have potentially far-reaching impacts on terrestrial and aquatic organisms that could be acute, through chronic bioaccumulation or microbial conversion to the highly toxic methyl mercury. Already, mercury concentrations in the Yukon River are some 3–32 times higher than reported for eight other major northern hemisphere rivers [18].

Ecological Effects of Options for Reducing Plastic Pollution

Public concern over plastic pollution and its effects on wildlife have dramatically increased. This has resulted in widespread interest by the public, governments, and businesses in options for reducing the volume of plastics used and discarded. Novel ongoing research into reducing impacts of conventional plastic waste is developing improvements to recycling technology [19] and the use of newly discovered microbes or enzymes to biodegrade conventional plastics [20]. Other approaches, such as the production of novel materials including biomass-derived plastic, may have unintended impacts. For example, substitutes such as polylactide (PLA) use maize (*Zea mays*) or switchgrass (*Panicum spp.*) as a feedstock, and, if produced on a large scale, could affect food and water security, as well as the available area of habitat for native species. Biodegradation of PLA under natural environmental conditions is also very slow, taking

between 100 and 1000 years [21]. Life-cycle assessments have not been applied to many of these new materials to evaluate the trade-offs of switching from conventional plastics. Furthermore, seeking substitutes for plastics may prevent public awareness of the benefits of reducing overall consumption.

Effects of Shinorine Sunscreens on Corals and Other Marine Species

The amino acid shinorine, which strongly absorbs UV light and hence has potential for use in sunscreens, has recently been produced using a synthetic biology approach [22]. Shinorine is currently produced from wild-harvested algae (*Porphyra umbilicalis*), but the new process has inserted a gene cluster from the filamentous cyanobacterium *Fischerella* into the freshwater cyanobacteria *Synechocystis*, yielding titres commensurate with commercial use [22]. Many conventional sunscreens currently contain oxybenzone and octinoxate, which are thought to contribute to coral reef bleaching through direct toxicity and increased risk of viral infection in coral [23]. As a result, there is considerable interest in developing new sunscreens that do not have negative effects on corals. However, shinorine has wider biological effects, such as stimulating inflammatory responses in humans [24]. The potential effects on marine organisms of extensive adoption of shinorine in sunscreen products are unknown.

A New Irrigation Canal in Northwest China Supplied by Water from the Qinghai-Tibet Plateau

A newly proposed canal, the Hongqi River, has gained traction as a mechanism to irrigate agriculturally unproductive semidesert in northern China [25]. The planned 6188 km canal would divert freshwater from the Yarlung-Zangbo River, and travel along the eastern edge of the Qinghai-Tibetan plateau to Xinjiang. The annual water flow could be 60 billion m³, equivalent to the annual runoff of the Yellow River, which would irrigate an area of approximately 200 000 km². To date, environmental impact assessments have not been published, yet this project could have substantial ecological effects. First, there may be direct impacts on native species and ecosystems [26] through irrigation and conversion to agriculture. Second, changing patterns of river connectivity and hydrological regimes may impact in-stream and riparian ecology and affect regional land cover by reducing water flow over huge areas. Third, water extraction on this scale is likely to affect the downstream ecology of the Yarlung-Zangbo River in India, Bangladesh, and elsewhere. Such changes could have dramatic impacts on biodiversity [26] and regional climate, including precipitation patterns. They could also cause a major shift in human settlement patterns, with up to 100 000 people directly displaced. Furthermore, changes in hydrology may increase the probability of earthquakes [27]. Although the canal is still conceptual, proposals have been announced publicly, and further development seems plausible [27].

Modification of Weather in the Tibetan Plateau by Cloud Seeding

China's state-run Aerospace Science and Technology Corporation has announced plans to build an extensive network of cloud-seeding devices on the mountain ridges lining the Tibetan Plateau [China needs more water. So it's building a rain-making network three times the size of Spain. (<https://www.scmp.com/news/china/society/article/2138866/china-needs-more-water-so-its-building-rain-making-network-three>)]. The project has been made possible through the application of military rocket technology, controlled by a satellite network. These rockets can burn high-density fuel in low-oxygen, high-elevation environments and release silver iodide particles into the atmosphere [China is using furnaces to manufacture 10 billion tons of rain. (<https://www.popsci.com/china-cloud-seeding-silver-iodide-furnace>)]. These particles act as condensation nuclei that crystallise cloud vapour to induce precipitation. With plans to cover 1.6 million km², this could add 10 billion m³ of water each year to the current annual rainfall of 200–500 mm, with the potential to alter

substantially the weather over large areas. If implemented, cloud seeding could have considerable effects on the semiarid alpine ecosystems of the region, increasing loss of the current alpine cold steppe and meadow habitats and threatening many endemic species in the region. Additionally, there are concerns that altering current weather patterns could affect water availability from some of Asia's major rivers, on which 1.4 billion people currently depend.

Salt-Tolerant Strains of Rice

Rising sea-levels and irrigation have driven the salinization of both coastal and inland agricultural soils, leading agronomists to seek to develop salt-tolerant strains of staple crops. This has included a recent intensive drive to use genetic technology to develop salt-tolerant rice (*Oryza sativa*) in China (e.g., [28]), and a recent collaboration between China and Dubai may have increased the likelihood of its commercial cultivation in halophytic regions. New strains of rice have yielded over 6.0 t/ha [Saline soil rice experiment a success in China. (http://www.xinhuanet.com/english/2017-09/28/c_136646404.htm)] when irrigated with dilute seawater; this is comparable with commercial yields in many rice-growing regions of the world [29]. If these yields are transferable to larger areas, rice production could become feasible on saline and alkaline soils that currently cannot support this cereal. According to the Agriculture Department of China, there were approximately 34 million ha of saline-alkali land in China at the end of 2015 [30]. If large-scale cultivation is undertaken, appropriation of additional freshwater will still be necessary, as the salinity of water used in the Dubai experiments was a tenth that of seawater. Salinization and other ecological effects of conversion of natural ecosystems to commercial cultivation of salt-tolerant rice, especially in coastal areas and continental inland salt steppe, have not been fully explored.

US Government Decision not to Regulate Gene-Edited Plants

Gene editing using novel techniques, such as clustered regularly interspaced short palindromic repeats (CRISPR), can introduce plant traits more quickly and precisely than traditional methods, potentially increasing crop productivity. For example, a team in China recently developed a variety of rice that yielded 25–31% more grain than nonedited rice in field tests [31]. It may also be used to transform species that have not formerly been utilised by humans into new crops, via targeted changes to plant toxicity, fruit size, nutritional content, or growth conditions [32]. In March 2018, the US Department of Agriculture announced that it had no plans to regulate gene editing of plants that otherwise could be developed via traditional breeding techniques [33]. By contrast, the European Court of Justice stated in July 2018 that gene-edited crops should be subject to the same stringent regulations that apply to genetically modified organisms [Court of Justice of the European Union (2018) Press Release No 111/18 (<https://curia.europa.eu/jcms/upload/docs/application/pdf/2018-07/cp180111en.pdf>)].

Despite the European Union ruling, the absence of US regulation is likely to catalyse innovation in gene editing, and research is currently underway to improve efficiency, without introducing other genomic changes that have unintended and undesirable consequences. Depending on the specifics of the gene-edited plants and associated production systems, effects on biodiversity could be positive or negative. These could range from reductions in agro-chemicals usage and the area needed for crop production, to further intensification of cropping and forestry systems and unforeseen effects on native species, and increases in use of various agro-chemicals if resistant crop varieties are developed.

Effect on Insects of Transgenic Oilseed Crops that Produce Omega-3 Fatty Acids

Oilseed varieties have recently been genetically engineered to produce the omega-3 fatty acids eicosapentaenoic acid (EPA) and docosapentaenoic acid (DHA), which do not usually occur in terrestrial plants [34]. The technology enhances the nutritional value of the oilseeds for humans,

and could also substantially reduce demand for fatty acids from wild-caught fisheries, which currently supply EPA and DHA in fishmeal and fish oil for the aquaculture industry and human dietary supplements. However, fatty acids are involved in key physiological functions in invertebrates and vertebrates. The inclusion of EPA and DHA in the fat profile of oilseeds proportionally reduces the availability of alpha-linolenic acid, which is essential for health, growth, cognition, and survival in terrestrial insects [35]. In cropping systems, these highly bioactive fatty acids would add a novel component to the diets of primary consumers, with potentially major impacts across food webs. For instance, butterfly larvae feeding on these crops develop into heavier adults but have smaller wings that are more likely to be deformed [36]. It is unclear whether regulatory agencies worldwide have examined the potential for these novel crops to have unintended consequences on animals, especially insects, in agricultural areas.

Harnessing Plant Microbiomes for Agricultural Production and Ecosystem Restoration

Plants host a diverse community of tightly associated microbes (their microbiome), which facilitates tolerance of stress such as drought and enhances their growth and disease resistance [37]. Manipulation of plant microbiomes has considerable potential to increase the success of ecosystem restoration actions [38] and improve agricultural yields and disease resistance [39]. To date, most biome manipulations have inoculated plants with a few beneficial microbial strains, whereas manipulating complex microbial communities largely has not been feasible [39]. Technological advances have recently reinvigorated this field. Several start-up companies are actively exploiting the plant microbiome, aided by increasingly cheap DNA sequencing and developments in analytical techniques such as machine learning. For example, Indigo Agriculture identified the microbiome of healthy cotton plants under drought conditions, and sells microbe-coated cotton seeds that have 11–15% greater yield during drought. AgBiome has altered crop microbiomes to combat fungal diseases, reducing the need for fungicides. Given demand for sustainable agricultural systems and mistrust of genetically modified organisms, elucidating the rules of functionally programmable plant microbiome assembly may lead to another revolution in agriculture. Effects on biological diversity may be both positive and negative, from reduced pesticide and fertiliser use, to agricultural expansion into areas formerly marginal for agriculture but rich in wildlife.

Expansion of Plantations and Infrastructure into Indo-Malay Islands

Many Indo-Malay islands have high species richness and exceptional levels of endemism. However, only 2% of land in the region is formally protected, and annual rates of deforestation are increasing. The average size of a palm oil plantation across the whole Indo-Malay Archipelago is currently approximately 1 km², compared with 10 km² in Borneo and 6 km² in Papua New Guinea, where palm oil plantations are well-established [40]. However, there are signs of expanding infrastructure and industrialization of plantations across the region. For example, in Halmahera in Indonesia, industrial housing complexes accounted for 37% of major deforestation in 2014, and deforestation increased by 250% in 2015 as industrial scale palm oil cultivation commenced. Across southeast Asia, commodity-driven deforestation accounts for 61% of tree cover loss [41], and former estimates of annual forest loss across the region were biased downwards. Although the damaging consequences of the expansion of palm oil plantations in the region are well-known, with global annual production increasing from 4.5 million tonnes to 70 million tonnes between 1980 and 2014, and demand predicted to grow by 1.7% each year until 2050 [42], the impacts of their spread into small, highly biodiverse, and fragile island systems have not been fully considered. The high levels of endemism in this region, especially on the small islands of Nusa Tenggara and Maluku, suggest that further palm oil plantation expansion could cause a substantial number of extinctions across the region.

Development of Fisheries in the Mesopelagic Zone

The mesopelagic zone of the ocean extends from depths of 200–1000 m, and this largely unexplored biome is biologically rich [43]. To date, technological limitations and high costs have constrained exploitation of this zone by commercial fisheries. However, recent estimates of an abundant and virtually untapped biomass of mesopelagic fishes (as much as 10^9 tonnes), coupled with growing demand for raw feed for the aquaculture sector, emerging markets for food supplements, and changing policy contexts for traditional fisheries, have reignited interests in commercial exploitation [44]. Although the economic viability remains unclear, several countries, including Norway and Pakistan, have issued experimental licences for commercial harvesting [45] [Mission to the Twilight Zone; the urgent quest to explore one of Earth's hidden frontiers. (<http://www.whoi.edu/oceanus/feature/mission-to-the-ocean—s-twilight-zone>)]. Mesopelagic fish species connect primary consumers and predators in oceanic food webs, and their slow growth and reproductive rates make them highly vulnerable to depletion. Furthermore, these species play a critical role in transporting organic carbon to the deep sea; the effects of harvesting this biomass on marine carbon cycles are unknown. The potential for extensive extraction of mesopelagic communities and the absence of effective regulations for fishing the high seas [6] suggest that effects on marine life, food webs, and the global climate may be substantial [Mission to the Twilight Zone; the urgent quest to explore one of Earth's hidden frontiers. (<http://www.whoi.edu/oceanus/feature/mission-to-the-ocean—s-twilight-zone>)].

Industrial Microbial Feed Production

Expanding human population and changing diets [46] are increasing demand for high-quality protein from livestock, with associated environmental effects such as land-use change, loss of biodiversity, nutrient enrichment, and emissions of greenhouse gases [47]. Novel livestock feed sources could mitigate these environmental effects. One proposal is the use of industrially produced microbial protein to feed animals. Replacing 2% of livestock feed with microbial protein could decrease cropland area, nitrogen losses, and agricultural greenhouse gas emissions by more than 5% [48]. The particular microbial protein production system used determines whether emissions and land-use change offsets are positive or negative. Microbial protein produced from natural gas or hydrogen could decouple production from cropland, reducing negative effects of cultivation but requiring considerable amounts of energy. Vegetable-based feedstocks such as sugar or biogas have fewer environmental benefits, requiring agricultural land for production, and potentially increasing emissions of nitrogen and greenhouse gases. The global effects of production system displacement on human livelihoods also are unclear.

Innovative Insurance Products to Share Costs and Benefits of Protecting Natural Assets

Through sustainable management, ecosystems can provide major services to people [49]. There is an effort to develop insurance products to cover valuable natural assets, analogous to the use of other insurance schemes that protect assets, avoid financial loss, and provide funds for repairs [Business to the rescue: insurance for reef restoration. (<https://www.forbes.com/sites/marktercek/2018/03/08/business-to-the-rescue-insurance-for-reef-restoration/#20ce9c773e0c>)]. This is a novel development, as it is the natural assets themselves that are being insured against loss or damage. In Mexico, such a scheme is being used to share the costs and benefits of protecting a stretch of the Mesoamerican Reef. The Mexican government, along with local hotel owners, the insurance industry, and The Nature Conservancy have developed an insurance product through a trust fund called the Coastal Zone Management Trust. The Trust has two roles: to buy an insurance policy on a stretch of the reef, and to maintain the reef and local beaches. On the basis of a parametric policy, where payment is

triggered when a specified wind-speed is reached, the Trust will make funds available to restore the reef and beach after a severe storm [Insuring nature to ensure a resilient future (https://global.nature.org/content/insuring-nature-to-ensure-a-resilient-future?src=r_v_insuringnature)]. This type of innovative insurance product could help protect and improve the health of other natural systems to the continued benefit of people.

Effects of Noncompliance with the Montreal Protocol on Global Environmental Governance
Stratospheric levels of chlorofluorocarbon 11 (CFC-11), one of the most potent ozone-depleting compounds, have been declining much more slowly than expected [50]. This could slow the rate of reversal of the ozone hole, resulting in an increase in the amount of UV radiation reaching Earth, with negative effects on humans and other species. In 1987, the globally ratified Montreal Protocol on Substances that Deplete the Ozone Layer introduced stepped limits on CFC production and use, culminating in a global ban by 2010. The recent trend in CFC levels raised concerns that CFCs may again be in illicit production. Further investigation provided evidence that CFC-11 is being used illegally in parts of China for the manufacture of foam insulation for the construction industry [51]. The Montreal Protocol has long been heralded as a rare success among international environmental treaties, and is the most successful example to date. The recent developments raise questions about the feasibility of enforcing multilateral agreements in general. Failure to resolve this apparent compliance challenge is likely to have profound effects on the future credibility of global environmental governance.

Concluding Remarks

Each annual horizon scan for global conservation issues identifies a diverse set of topics. Of the 15 topics identified this year, many focus on advances or applications in technology or step changes in the demand for commodities, and the potential effects on the ecosystems supplying those resources. Most of the issues we identified this year, as in previous years, are new developments that could have direct or unintended environmental effects. Nevertheless, six of the developments could have either positive or negative consequences (or both): the capacity of Antarctic benthos to store carbon, options for addressing plastic pollution, regulation of gene-edited plants, harnessing plant microbiomes for agricultural production, industrial microbial feed production, and shinorine sunscreens. A number of these issues highlight the challenges of devising solutions to many conservation challenges. If the implementation of solutions, such as alternatives to plastics or sunscreens, are associated with unforeseen or uncertain negative consequences, this can be a difficult message to communicate effectively to innovation funders, policy makers, and the general public. Only one issue (innovative insurance products) could be considered entirely positive for the conservation of biological diversity.

A recurring theme in our horizon scans over the past 5 years is the ability of the governments of influential countries, such as China and the United States of America, to make policy or economic decisions regarding infrastructure, trade, or agriculture that can result in global environmental impacts. Such governmental decisions, for which the reasoning and timing can be opaque and unpredictable, can have considerable influence over whether a new approach or technology is widely adopted. Topics that fall into this area include cloud seeding and irrigation on the Tibetan Plateau, the US government's decision not to regulate gene-edited plants, and, potentially, the planting of salt-tolerant rice, if international collaboration or state-backing drives spatially extensive deployment. Similar issues identified in previous horizon scans included ecological civilisation policies in China, China's Belt and Road Initiative, and the erection of fences along national borders [1,4,52]. The effects of these phenomena may increase if intergovernmental institutions become less important. Indeed, decisions by the governments of influential countries will also determine the effectiveness of global

environmental governance or agreements, such as the Montreal Protocol (1987) and the Paris Agreement of the United Nations Framework Convention on Climate Change (2015).

Another striking aspect of the topics raised here is that many are associated with novel agricultural technologies (gene-edited plants, new irrigation methods, or infrastructure). This surely reflects a perceived urgency in meeting food demands for growing and enriching global populations, coinciding with a maturing biotechnology revolution. Past examples where agricultural innovation rapidly threatened wild animals have included the effects of diclofenac on vultures [53] and neonicotinoids on bees [54], with agricultural intensification responsible for continent-wide losses of species (e.g., [55]). We previously identified the rapidly growing field of biotechnology as an area to watch [1], and these developments appear now to be increasingly likely, as gene-editing technologies become more effective and widely used, their products become more marketable, and reduced regulation makes their large-scale deployment, maybe without adequate checks, more likely [56].

A challenge in our horizon-scanning process is deciding where on the spectrum from novel-uncertain to established-certain we should target identification of issues. We aim to avoid both topics that are so speculative that they are unlikely to materialise, as well as those that are widely known or are unlikely to have major effects. We thus seek topics for which awareness is currently low, but evidence is sufficient to suggest that realisation is plausible. Topics that were submitted this year, but considered too uncertain included the use of sunscreen layers at the sea surface to protect coral reefs, the impacts of neoprotectionist trade policies, the effects of ocean acidification on phytotransferrin in diatoms [57], and the effects of daisy-chain gene drives on wildlife [58]. Because these issues were based solely on a single scientific publication or press release, there was a low level of evidence and high uncertainty as to whether substantial effects may result. However, we plan to revisit these topics in the future if more evidence emerges with which to evaluate them. Conversely, other submitted topics, such as the use of common species as substitutes for rare species in traditional medicine, the use of portable DNA tests to detect trade in illegal wildlife products, or the ban on sunscreens to protect reefs in Hawaii, were considered by the group to be too well-known for retention.

More than 70 experts from 46 organisations have participated in our annual horizon scans over the last 10 years. Of the 150 topics identified from 2010 to 2019, 30 were related to effects of changes in energy production and resource use; 21 to social, political, and economic changes; 16 to effects of climate change; 16 to changes in agriculture; 15 to changes in pollutants and toxicants (including greenhouse gases); and 12 to biotechnology and other technological advances. We classified topics as new technologies if they were new developments, but their potential effects are not yet clear or may be extensive, such as artificial life (2010 [5]) or the 3D printing revolution (2013 [59]). Other recurring topics included impacts on marine conservation (11 issues) or terrestrial conservation (nine issues), effects of emerging or re-emerging diseases (nine issues) and non-native invasive species (seven issues), and novel approaches to monitoring (four issues). Where feasible, we classified topics on the basis of their potential effects. For example, we included both methane venting from the ocean floor (2011 [60]) and rapid transformation of the Arctic benthos (2018 [6]) as effects of climate change.

We believe that these annual scans continue to identify emerging issues that are relevant to global conservation and should be considered by researchers, policy makers, and practitioners. In a companion paper, we assess the issues identified in the first horizon scan [5], and investigate the degree to which the issues have been realised or become greater priorities in the scientific and policy agenda.

Acknowledgments

This exercise was coordinated by the Cambridge Conservation Initiative and funded by the Natural Environment Research Council and the Royal Society for the Protection of Birds. We are grateful to everyone who submitted ideas to the exercise. We thank Beatriz Morales Nin and Erlend Moksness (exploitation of the mesopelagic zone), Craig Macadam (effect on terrestrial food webs of transgenic oilseed crops that produce omega-3 fatty acids), Ros Aveling and Gabriella Church (ecological effects of options for reducing plastic pollution), and Hannah Becker (extensive release of mercury by thawing permafrost) for suggesting issues presented in this paper. Thanks to the editor and anonymous reviewer for efficient and useful comments on the manuscript. W.J.S. is funded by Arcadia. X.L.R. was funded by BiodivERsA, C.L.S. was part-funded by the South African National Research Foundation, L.V.D. by NERC (NE/N014472/1), and Z.J. by Basic Science Special Project of MOST (2013FY110300 & CAS NOXDA19050204).

References

- Sutherland, W.J. *et al.* (2017) A 2017 horizon scan of emerging issues for global conservation and biological diversity. *Trends Ecol. Evol.* 32, 31–40
- Larson, C. (2018) Asia's hunger for sand takes toll on ecology. *Science* 359, 964–965
- Figorilli, S. *et al.* (2018) A blockchain implementation prototype for the electronic open source traceability of wood along the whole supply chain. *Sensors* 18, 3133
- Sutherland, W.J. *et al.* (2016) A horizon scan of global conservation issues for 2016. *Trends Ecol. Evol.* 31, 44–53
- Sutherland, W.J. *et al.* (2010) A horizon scan of global conservation issues for 2010. *Trends Ecol. Evol.* 25, 1–7
- Sutherland, W.J. *et al.* (2018) A 2018 horizon scan of emerging issues for global conservation and biological diversity. *Trends Ecol. Evol.* 33, 47–57
- Sutherland, W.J. *et al.* (2011) Methods for collaboratively identifying research priorities and emerging issues in science and policy. *Methods Ecol. Evol.* 2, 238–247
- Mukherjee, N. *et al.* (2015) The Delphi technique in ecology and biological conservation: applications and guidelines. *Methods Ecol. Evol.* 6, 1097–1109
- Danziger, S. *et al.* (2011) Extraneous factors in judicial decisions. *Proc. Natl. Acad. Sci. U. S. A.* 108, 12001–12006
- Shepherd, A. *et al.* (2018) Mass balance of the Antarctic ice sheet from 1992 to 2017. *Nature* 558, 219–222
- Barnes, D.K.A. (2017) Iceberg killing fields limit huge potential for benthic blue carbon in Antarctic shallows. *Glob. Change Biol.* 23, 2649–2659
- Barnes, D.K.A. *et al.* (2018) Icebergs, sea ice, blue carbon and Antarctic climate feedbacks. *Philos. Trans. A Math. Phys. Eng. Sci.* 376, 20170176
- Scheuhammer, A.M. *et al.* (2007) Effects of environmental methylmercury on the health of wild birds, mammals and fish. *AMBIO* 16, 12–19
- Rieder, S.R. and Frey, B. (2013) Methyl-mercury affects microbial activity and biomass, bacterial community structure but rarely the fungal community structure. *Soil Biol. Biochem.* 64, 164–173
- Stern, G.A. *et al.* (2012) How does climate change influence arctic mercury? *Sci. Total Environ.* 414, 22–42
- Olson, C. *et al.* (2018) Mercury in active-layer tundra soils of Alaska: concentrations, pools, origins, and spatial distribution. *Glob. Biogeochem. Cycles* 32, 1058–1073
- Schuster, P.F. *et al.* (2018) Permafrost stores a globally significant amount of mercury. *Geophys. Res. Lett.* 45, 1463–1471
- Schuster, P.F. *et al.* (2011) Mercury export from the Yukon River basin and potential response to a changing climate. *Environ. Sci. Technol.* 45, 926
- Diaz-Silvarrey, L.S. *et al.* (2018) Monomer recovery through advanced pyrolysis of waste high density polyethylene (HDPE). *Green Chem.* 20, 1813–1823
- Austin, H.P. *et al.* (2018) Characterization and engineering of a plastic-degrading aromatic polyesterase. *Proc. Natl. Acad. Sci. U. S. A.* 115, E4350–E4357
- UNEP (2015) *Biodegradable Plastics and Marine Litter. Misperceptions, Concerns and Impacts on Marine Environments*, United Nations Environment Programme, (Nairobi)
- Yang, G. *et al.* (2018) Photosynthetic production of sunscreen shinorine using an engineered cyanobacterium. *ACS Synth. Biol.* 7, 664–671
- Downs, C.A. *et al.* (2016) Toxicopathological effects of the sunscreen UV filter, oxybenzone (benzophenone-3), on coral planulae and cultured primary cells and its environmental contamination in Hawaii and the US Virgin Islands. *Arch. Environ. Contam. Toxicol.* 70, 265–288
- Becker, K. *et al.* (2016) Immunomodulatory effects of the microsporine-like amino acids shinorene and porphyrin-334. *Marine Drugs* 14, 119
- Yang, Q. *et al.* (2018) The query: the feasibility of the water diversion function of “Hongqi River”. *J. Nat. Res.* 33, 893–898
- Foggin, J.M. (2018) Environmental conservation in the Tibetan Plateau region: lessons for China's Belt and Road Initiative in the mountains of Central Asia. *Land* 7, 52
- Shan, Z. (2018) Why did some of those mega-projects which claimed to benefit human beings failed? *Chin. Natl. Geogr.* 6, 14–21
- Zhou, Y. *et al.* (2018) The receptor-like cytoplasmic kinase STRK1 phosphorylates and activates CatC, thereby regulating H₂O₂ homeostasis and improving salt tolerance in rice. *Plant Cell* 30, 1100–1118
- Food and Agriculture Organization of the United Nations (2018) *FAOSTAT Statistics Database*, FAO, (Rome)
- Wang, S.J. *et al.* (2017) Research on saline-alkali soil amelioration with FGD gypsum. *Resour. Conserv. Recycl.* 121, 82–92
- Miao, C. *et al.* (2018) Mutations in a subfamily of abscisic acid receptor genes promote rice growth and productivity. *Proc. Natl. Acad. Sci. U. S. A.* 115, 6058–6063
- Zsögön, A. *et al.* (2018) De novo domestication of wild tomato using genome editing. *Nat. Biotechnol.* Published online October 1, 2018. <http://dx.doi.org/10.1038/nbt.4272>
- USDA (2018) *Secretary Perdue Issues USDA Statement on Plant Breeding Innovation*, US Department of Agriculture
- Usher, S. *et al.* (2017) Tailoring seed oil composition in the real world: optimising omega-3 long chain polyunsaturated fatty acid accumulation in transgenic *Camelina sativa*. *Sci. Rep.* 7, 6570
- Colombo, S.M. *et al.* (2018) Potential for novel production of omega-3 long-chain fatty acids by genetically engineered oilseed plants to alter terrestrial ecosystem dynamics. *Agric. Syst.* 164, 31–37
- Hixson, S.M. *et al.* (2016) Long-chain omega-3 polyunsaturated fatty acids have developmental effects on the crop pest, the cabbage white butterfly *Pieris rapae*. *PLoS One* 11, e0152264
- Rho, H. *et al.* (2017) Do endophytes promote growth of host plants under stress? A meta-analysis on plant-stress mitigation by endophytes. *Microb. Ecol.* 75, 407–418
- Harris, J. (2009) Soil microbial communities and restoration ecology: facilitators or followers? *Science* 325, 573–574

39. Finkel, O.M. *et al.* (2017) Understanding and exploiting beneficial plant microbes. *Curr. Opin. Plant Biol.* 38, 155–163
40. Hughes, A.C. (2018) Have Indo-Malaysian forests reached the end of the road? *Biol. Conserv.* 223, 129–137
41. Curtis, P.G. *et al.* (2018) Classifying drivers of global forest loss. *Science* 361, 1108–1111
42. Oil Palm and Biodiversity *et al.* (2018) *A Situation Analysis by the IUCN Oil Palm Task Force*. In Meijaard, E., ed.), IUCN, (IUCN Oil Palm Task Force Gland, Switzerland
43. Irigoien, X. *et al.* (2014) Large mesopelagic fishes biomass and trophic efficiency in the open ocean. *Nat. Commun.* 5, 3271
44. St. John, M.A. *et al.* (2016) A dark hole in our understanding of marine ecosystems and their services: perspectives from the mesopelagic community. *Front. Mar. Sci.* 3, 31
45. Prelezo, R. (2018) Exploring the economic viability of a mesopelagic fishery in the Bay of Biscay. *ICES J. Mar. Sci.* Published online January 24, 2018. <http://dx.doi.org/10.1093/icesjms/fsy001>
46. Godfray, H.C.J. *et al.* (2018) Meat consumption, health, and the environment. *Science* 361, eaam5324
47. Poore, J. and Nemecek, T. (2018) Reducing food's environmental impacts through producers and consumers. *Science* 360, 987–992
48. Pikaar, I. *et al.* (2018) Decoupling livestock from land use through industrial feed production pathways. *Environ. Sci. Technol.* 52, 7351–7359
49. Eggermont, H. *et al.* (2015) Nature-based solutions: new influence for environmental management and research in Europe. *GAIA* 24, 243–248
50. Montzka, S.A. *et al.* (2018) An unexpected and persistent increase in global emissions of ozone-depleting CFC-11. *Nature* 557, 413
51. EIA (2018) *Blowing It: Illegal Production and Use of Banned CFC-11 in China's Foam Blowing Industry*, Environmental Investigations Agency, (London)
52. Sutherland, W.J. *et al.* (2015) A horizon scan of global conservation issues for 2015. *Trends Ecol. Evol.* 30, 17–24
53. Oaks, J.L. *et al.* (2004) Diclofenac residues as the cause of vulture population decline in Pakistan. *Nature* 427, 630
54. Woodcock, B.A. *et al.* (2016) Impacts of neonicotinoid use on long-term population changes in wild bees in England. *Nat. Commun.* 7, 12459
55. Pe'er, G. *et al.* (2014) Agriculture policy: EU agricultural reform fails on biodiversity. *Science* 344, 1090–1092
56. Reeves, R.G. *et al.* (2018) Agricultural research, or a new bio-weapon system? *Science* 362, 35–37
57. McQuaid *et al.* (2018) Carbonate-sensitive phytoferritin controls high affinity iron uptake in diatoms. *Nature* 555, 534–537
58. Noble, C. *et al.* (2016) Daisy-chain gene drives for the alteration of local populations. *BioRxiv* 057307
59. Sutherland, W.J. *et al.* (2013) A horizon scan of global conservation issues for 2013. *Trends Ecol. Evol.* 28, 16–22
60. Sutherland, W.J. *et al.* (2011) A horizon scan of global conservation issues for 2011. *Trends Ecol. Evol.* 26, 10–16